

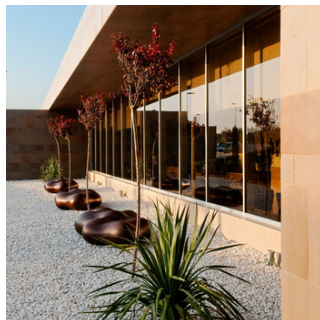
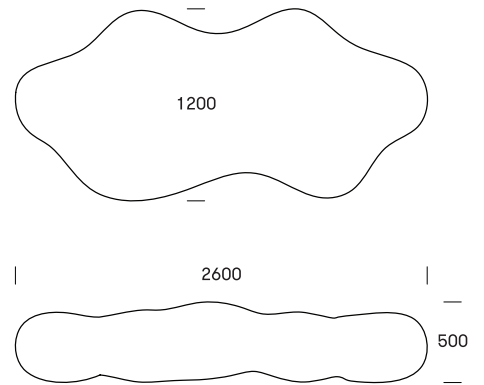
# FACTS

## LAVA # 173

LAVA invites informal breaks and creative expression on it and around it. This organic seating unit fits into urban spaces, parks, schools, institutions and company headquarters alike.

The highly inviting shape of LAVA attracts children and adults. Seats 5-7.

Design: Karim Rashid



# TECHNICAL DATA

## Material

Rotation moulded polyethylene, dyed. Moulded in one piece. UV-resistant, stands up to weather, wear and tear. The material is suitable for granulation and recycling.

## Dimensions

L2600 x B1200 x H500mm

Weight: 40 kg

## Mounting

Lava sits directly on the floor/terrain. Adjustable feet are provided for indoor use. Fittings for mounting must be ordered separately.

## Maintenance

This product withstands most cleaning agents and chemicals and can be cleaned using a high-pressure cleaner. The colour can be revived using vinyl cleaner or similar.

## Product code

173 0101 Lava red/ 40kg

173 0103 Lava orange / 40kg

173 0102 Lava lime / 40kg

173 0143 Lava beige / 40kg

173 0109 Lava, purple/ 40kg

173 0105 Lava, blue/ 40kg

B2 Brackets for ground fixation

B3 Brackets for surface fixation

## Standard colours (approx. RAL)



Red: RAL 3031



Orange: RAL 1037



Lime: RAL 100 80 80



Beige: RAL 1014



Purple: RAL 4007



Blue: RAL 5003